

OFFER BRĂILA RENTAL HALLS

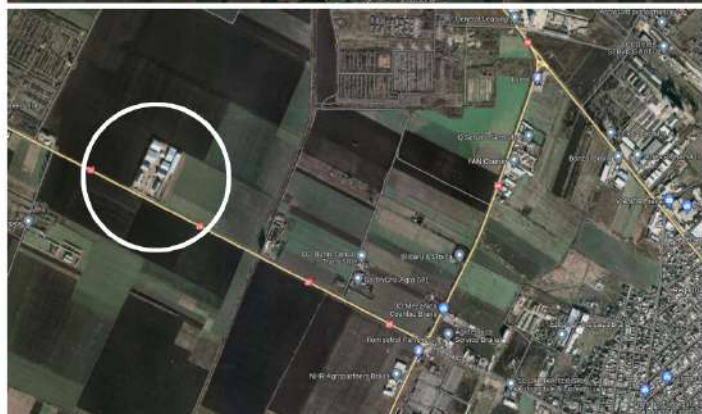
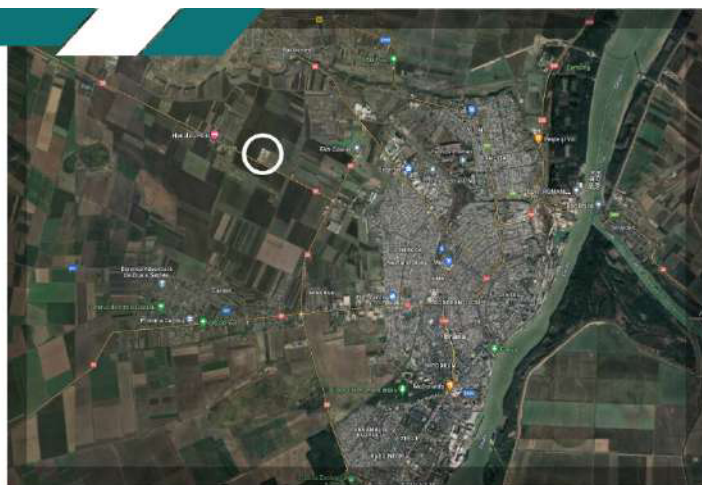


ABOUT US

- 7 GRAIN STORAGE HALLS IN A SURFACE OF 16000 m²
- ACCES AUTO DIN DRUMUL NAȚIONAL DN 23 BRĂILA - FOCȘANI, LA 3 KM DE CENTURA BRĂILEI
- CAR ACCESS FROM THE NATIONAL ROAD DN 23 BRĂILA - FOCȘANI, 3 KM FROM THE BRĂILA RINGVEHICLE ACCESS IN THE COURTYARD THROUGH THE GATE 10 M OPENING, ELECTRICALLY OPERATED BY REMOTE CONTROL
- THE HALLS ARE LOCATED IN FRONT OF BRĂILA COMMERCIAL PORT, 8 KM AND 30 KM FROM GALAȚI COMMERCIAL PORT
- 60 TON ELECTRONIC CAR SCALE WITH METROLOGICAL VERIFICATION
- ELECTRIC TRANSFORMER 250 KVA MEDIUM VOLTAGE
- GENERATOR GROUP
- PERIMETER INSURED AGAINST ATMOSPHERIC ELECTRIC DISCHARGES - LIGHTNING ROD
- 24H/24H VIDEO MONITORING, INCLUDING ONLINE
- 24H/24H GUARD
- 2 JCB FRONT LOADERS EACH EQUIPPED WITH 3 TON CAPACITY GRAIN LOADING BUCKET AND PALLET LOADING/UNLOADING BLADES
- OFFICES WITH RUNNING WATER, TOILET AND INTERNET
- LIGHTED COURTYARD PLUS MOVEMENT SOUND WARNING SENSORS
- ACCESS ROAD MAINTENANCE AND SNOW REMOVAL
- PSI WATER TANK 250 TONS
- 23 UNDERGROUND FIRE EXTINGUISHING HYDRANTS
- DIESEL FUEL TANK 9 TONS
- MACHINERY WORKSHOP
- MILL GRINDS GRAIN
- UTILITIES: ELECTRICITY - RUNNING WATER - NATURAL GAS - SEWERAGE



The property is located in Brăila county DN 23



Only 3 km away from the Brăila belt,
with direct car access from the national
road **Focșani - DN 23 Brăila**.

The new suspension bridge over the Danube has been inaugurated, creating a direct connection between the cities of Brăila and Tulcea.

This eliminates the need for a detour through Giurgeni - Vadul Oii or Fetești. The bridge is a significant development for connecting Tulcea with the rest of the country, providing fast and efficient access between the two cities.



The halls situated at the outskirts of Vădeni, on DN 23 and inside an agro-industrial complex, have a major advantage - they are available for rent as storage spaces for grain. These sheds provide an ideal environment for ensuring the safety and quality of the grain, thereby fulfilling the high demands and standards of the industry.

- Moreover, their strategic location is a significant asset as they are just 8 km away from the Brăila commercial port and 30 km away from the Galati commercial port. This makes it easy and convenient for the grain companies to access national and international markets, which helps to improve the efficiency and success of their import-export operations.



MAIN CAR ACCESS FROM DN 23





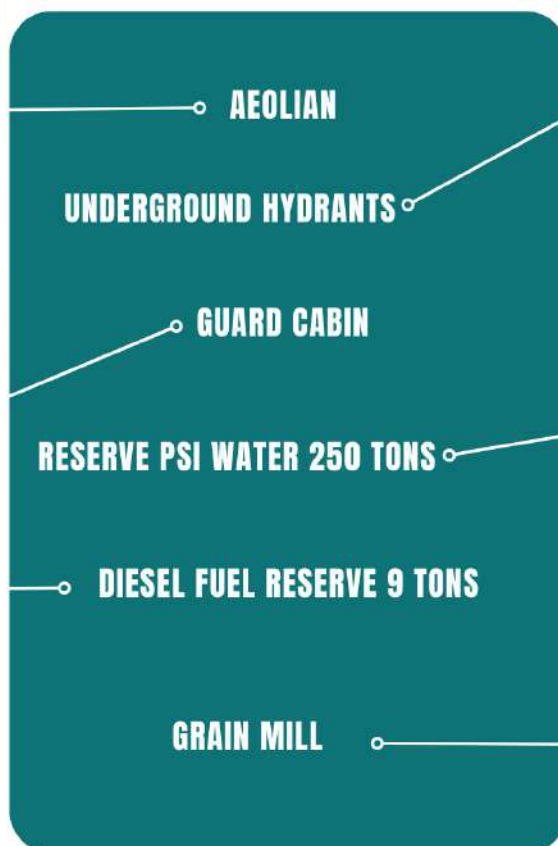
2 JCB front loaders, each with a 3-ton capacity grain loading bucket and pallet loading/unloading blades.

**ELECTRIC TRANSFORMER 250 KVA
MEDIUM VOLTAGE**



**ELECTRONIC CAR SCALE 60 TONE
METROLOGICALLY APPROVED FOR
COMMERCIAL TRANSACTIONS**

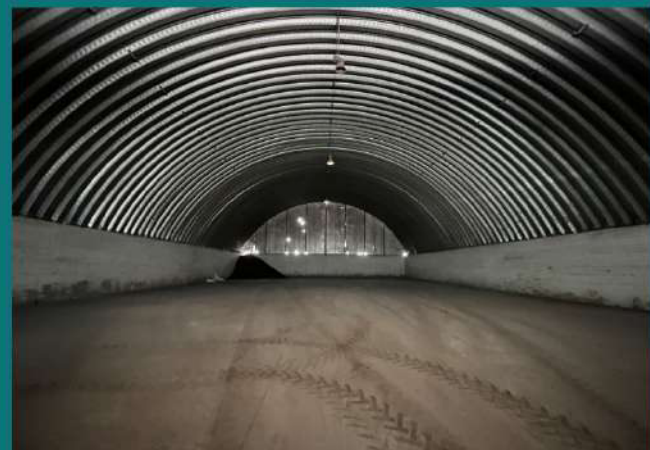
**OFFICES WITH RUNNING WATER,
TOILET AND INTERNET**





HALL 1

CAR ACCESS IN THE YARD
ON THE GATE - 10M OPENING



24H/24H VIDEO MONITORING, INCLUDING ONLINE



24H/24H GUARD

HALL 1



- WALL HEIGHT 3.5 M (REINFORCED CONCRETE)
- BOOKLET WITH FIRE EXTINGUISHERS IN FRONT OF THE HALL
- UNDERGROUND HYDRANTS LOCATED IN FRONT OF THE HALL
- METALLIC STRUCTURE: METALLIC POSTS AND BRACKET
- MINIMUM DISTANCE BETWEEN INTERIOR POSTS IS 12 M



- LENGTH - 40 M
- WIDTH - 25 M
- HEIGHT - 12 M
- USEFUL SURFACE - 1000 M²



- CONCRETE FLOOR
- LARGE SLIDING DOOR ON RAIL FOR ACCESS CAR TRUCK



- TIPPING POSSIBILITY INSIDE THE HALL
- NO POSTS INSIDE THE HALL
- STORAGE CAPACITY:
- WHEAT 6500 TO
- CORN - 6500 TO
- SUNFLOWER 3000 - TO



- ELECTRICAL PANEL WITH SEPARATE METERING
- OFFICES WITH RUNNING WATER, TOILET AND INTERNET
- HALL INTERIOR LIGHTING
- ELECTRIC SOCKET 380 V - 32 A
- ELECTRIC OUTLET 220 V
- SEMI ROUND ROOF

HALL 2

CAR ACCESS IN THE YARD
ON THE GATE - 10M OPENING



24H/24H VIDEO MONITORING, INCLUDING ONLINE



24H/24H GUARD

HALL 2



- LENGTH - 40 M
- WIDTH - 25 M
- HEIGHT - 12 M
- USEFUL SURFACE - 1100 M²



- CONCRETE FLOOR
- LARGE SLIDING DOOR ON RAIL FOR ACCESS CAR TRUCK



- TIPPING POSSIBILITY INSIDE THE HALL
- NO POSTS INSIDE THE HALL
- STORAGE CAPACITY:
- WHEAT 6500 TO
- CORN - 6500 TO
- SUNFLOWER - 3000 TO



- ELECTRICAL PANEL WITH SEPARATE METERING
- OFFICES WITH RUNNING WATER, TOILET AND INTERNET
- HALL INTERIOR LIGHTING
- ELECTRIC SOCKET 380 V - 32 A
- ELECTRIC OUTLET 220 V
- SEMI ROUND ROOF



- WALL HEIGHT 3.5 M (REINFORCED CONCRETE)
- BOOKLET WITH FIRE EXTINGUISHERS IN FRONT OF THE HALL
- UNDERGROUND HYDRANTS LOCATED IN FRONT OF THE HALL
- METALLIC STRUCTURE: METALLIC POSTS AND BRACKET
- MINIMUM DISTANCE BETWEEN INTERIOR POSTS IS 12 M

HALL 3

CAR ACCESS IN THE YARD
ON THE GATE - 10M OPENING



24H/24H VIDEO MONITORING, INCLUDING ONLINE



24H/24H GUARD

HALL

3

3

7

2

- WALL HEIGHT 3.5 M (BRICK)
- BOOKLET WITH FIRE EXTINGUISHERS IN FRONT OF THE HALL
- UNDERGROUND HYDRANTS LOCATED IN FRONT OF THE HALL
- METALLIC STRUCTURE: METALLIC POSTS AND BRACKET
- MINIMUM DISTANCE BETWEEN INTERIOR POSTS IS 12 M



- LENGTH - 38.5 M
- WIDTH - 42.4 M
- HEIGHT - 12 M
- USEFUL SURFACE - 1600 M²



- CONCRETE FLOOR
- LARGE HINGED DOORS FOR CAR TRUCK ACCESS



- TIPPING POSSIBILITY INSIDE THE HALL
- STORAGE CAPACITY:
- WHEAT 7500 TO
- CORN - 7500 TO
- SUNFLOWER - 3500 TO



- ELECTRICAL PANEL WITH SEPARATE METERING
- HALL INTERIOR LIGHTING
- ELECTRIC SOCKET 380 V - 32 A
- ELECTRIC OUTLET 220 V
- PREPAID ROOF PHOTOVOLTAIC PANELS

HALL 4

**CAR ACCESS IN THE YARD
ON THE GATE - 10M OPENING**



24H/24H VIDEO MONITORING, INCLUDING ONLINE



24H/24H GUARD

HALL 4



- LENGTH - 50 M
- WIDTH - 40 M
- HEIGHT - 12 M
- USEFUL SURFACE - 2600 M²



- CONCRETE FLOOR
- LARGE HINGED DOORS FOR CAR TRUCK ACCESS



- TIPPING POSSIBILITY INSIDE THE HALL
- STORAGE CAPACITY:
- WHEAT 10000 TO
- CORN - 10000 TO
- SUNFLOWER - 5000 TO
- ELECTRIC GRAIN MILL



- ELECTRICAL PANEL WITH SEPARATE METERING
- HALL INTERIOR LIGHTING
- ELECTRIC SOCKET 380 V - 32 A
- ELECTRIC OUTLET 220 V
- PREPAID ROOF PHOTOVOLTAIC PANELS



- WALL HEIGHT 3.5 M (BRICK)
- BOOKLET WITH FIRE EXTINGUISHERS IN FRONT OF THE HALL
- UNDERGROUND HYDRANTS LOCATED IN FRONT OF THE HALL
- METALLIC STRUCTURE: METALLIC POSTS AND BRACKET
- MINIMUM DISTANCE BETWEEN INTERIOR POSTS IS 12 M

HALL 5



**CAR ACCESS IN THE YARD
ON THE GATE - 10M OPENING**



24H/24H VIDEO MONITORING, INCLUDING ONLINE



24H/24H GUARD

HALL 5



- WALL HEIGHT 3.5 M (BRICK)
- BOOKLET WITH FIRE EXTINGUISHERS IN FRONT OF THE HALL
- UNDERGROUND HYDRANTS LOCATED IN FRONT OF THE HALL
- METALLIC STRUCTURE: METALLIC POSTS AND BRACKET
- MINIMUM DISTANCE BETWEEN INTERIOR POSTS IS 12 M



- LENGTH - 45 M
- WIDTH - 50 M
- HEIGHT - 12 M
- USEFUL SURFACE - 2250 M²



- CONCRETE FLOOR
- LARGE HINGED DOORS
FOR CAR TRUCK ACCESS



- TIPPING POSSIBILITY INSIDE THE HALL
- STORAGE CAPACITY:
- WHEAT 1200 TO
- CORN - 1200 TO
- SUNFLOWER - 6000 TO



- ELECTRICAL PANEL WITH SEPARATE METERING
- HALL INTERIOR LIGHTING
- ELECTRIC SOCKET 380 V - 32 A
- ELECTRIC OUTLET 220 V
- PREPAID ROOF PHOTOVOLTAIC PANELS

HALL 6

**CAR ACCESS IN THE YARD
ON THE GATE - 10M OPENING**



24H/24H VIDEO MONITORING, INCLUDING ONLINE



24H/24H GUARD

HALL 6



- LENGTH - 48 M
- WIDTH - 36 M
- HEIGHT - 12 M
- USEFUL SURFACE - 1728 M²



- HELICOPTERED CONCRETE FLOOR
- LARGE HINGED DOORS FOR CAR TRUCK ACCESS
- MECHANICAL WORKSHOP ANNEX



- TIPPING POSSIBILITY INSIDE THE HALL
- NO POSTS INSIDE THE HALL
- STORAGE CAPACITY:
 - WHEAT 12000 TO
 - CORN - 12000 TO
 - SUNFLOWER - 6000 TO



- ELECTRICAL PANEL WITH SEPARATE METERING
- HALL INTERIOR LIGHTING
- ELECTRIC SOCKET 380 V - 32 A
- ELECTRIC OUTLET 220 V
- PREPAID ROOF PHOTOVOLTAIC PANELS



- WALL HEIGHT 3.5 M (BRICK)
- BOOKLET WITH FIRE EXTINGUISHERS IN FRONT OF THE HALL
- UNDERGROUND HYDRANTS LOCATED IN FRONT OF THE HALL

HALL 7

CAR ACCESS IN THE YARD ON THE GATE - 10M OPENING



24H/24H VIDEO MONITORING, INCLUDING ONLINE



24H/24H GUARD

HALL 7



- WALL HEIGHT 3.5 M (BRICK)
- BOOKLET WITH FIRE EXTINGUISHERS IN FRONT OF THE HALL
- UNDERGROUND HYDRANTS LOCATED IN FRONT OF THE HALL
- METALLIC STRUCTURE: METALLIC POSTS AND BRACKET
- MINIMUM DISTANCE BETWEEN INTERIOR POSTS IS 12 M



- LENGTH - 200 M
- WIDTH - 25 M
- HEIGHT - 12 M
- USEFUL SURFACE - 5000 M²



- CONCRETE FLOOR
- 4 LARGE HINGED DOORS
FOR CAR TRUCK ACCESS



- TIPPING POSSIBILITY INSIDE THE HALL
- STORAGE CAPACITY:
- WHEAT 15000 TO
- CORN - 15000 TO
- SUNFLOWER - 8000 TO



- ELECTRICAL PANEL WITH SEPARATE METERING
- HALL INTERIOR LIGHTING
- ELECTRIC SOCKET 380 V - 32 A
- ELECTRIC OUTLET 220 V
- PREPAID ROOF PHOTOVOLTAIC PANELS



CONTACT US:

+ 40 744 639 049

+40 747 394 805

 eelt@eeltrading.com